

\*

1. ...  
2. ...  
3. ...

ARTICLE INFO

ABSTRACT

7: 2013  
14: 2013

20.30.1( )- 07.03,3

245 3 0 6 4 4 2 7 ( 3 ( 2 3 6 4 0 ) 2 7 . 3 7 6 8 4 , 0 ) 0 ( ) 2 8 . 3 1 \* ( ) 2 3 - 1 . ( ) 3 6 2

Handwritten musical notation on a five-line staff. The notation includes various notes, rests, and annotations. The following table summarizes the key elements:

Element	Location / Description
Annotation	(2011, 2013) written in blue ink above the staff.
Annotation	2013 written in blue ink above the staff.
Annotation	2011 and 2002 written in blue ink below the staff.
Staff	Five-line musical staff with various notes and rests.

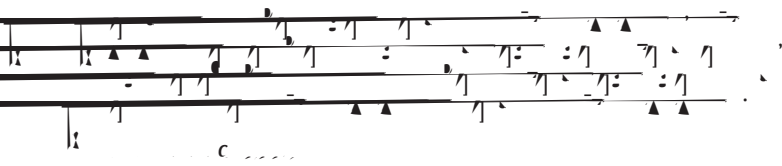
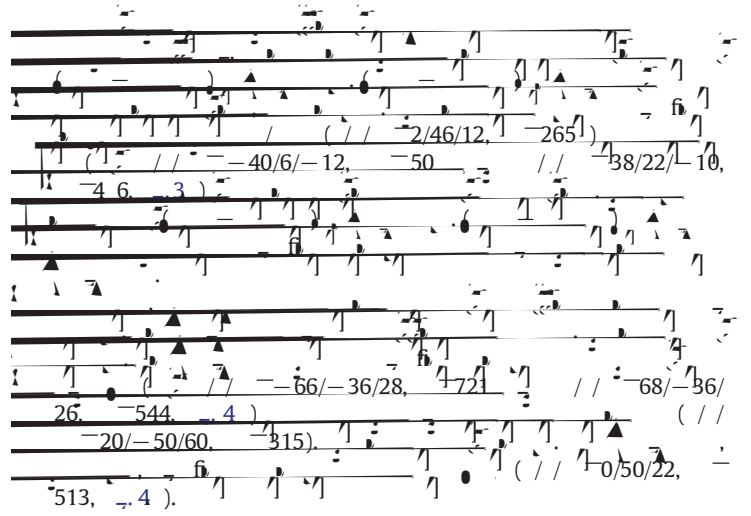
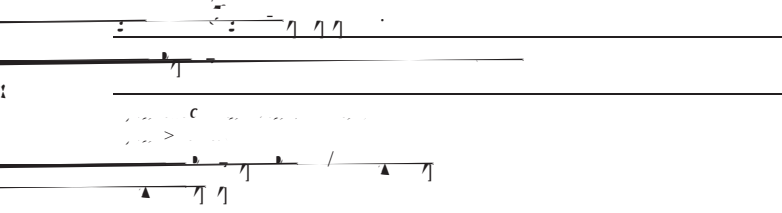
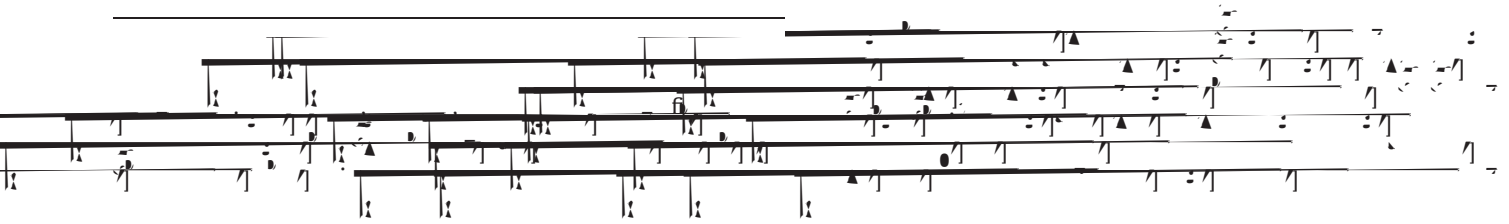




Table 2

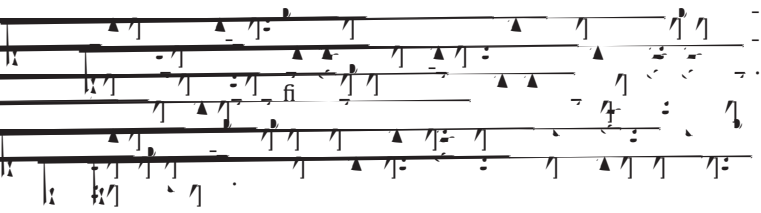


Discussion





( : 7 7 , 2012 : 7 7 , 2013



Acknowledgments

